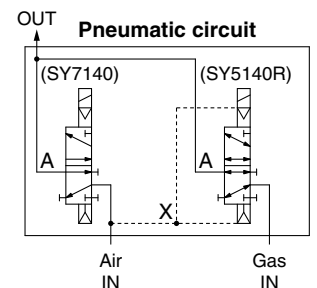
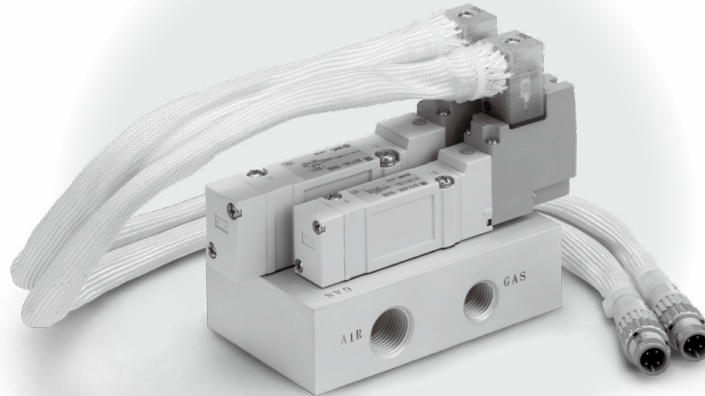


# Gas/Air Switching Valve SS5Y7-X424-Q

Shield gas valve and air blow valve are integrated.

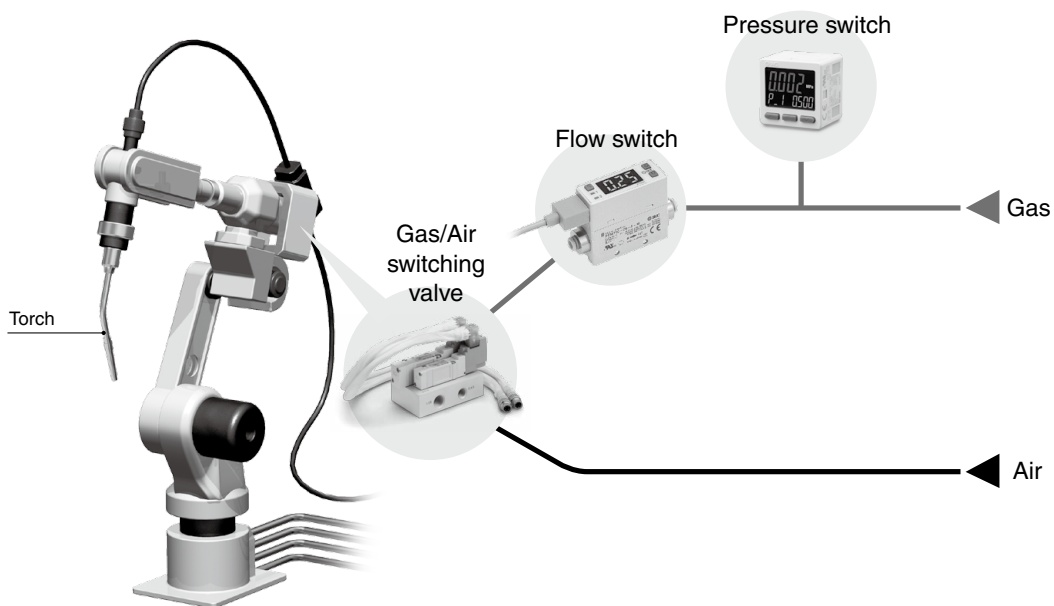


## Tip service life extended

Service life can be extended by blowing the air to cool the tip after arc welding.

→Tip service life is improved, and the number of tip replacements and the tip costs are reduced.

## Space saving/Compact



## Energy saving product

Power consumption **0.5 W**

# Gas/Air Switching Valve

# SS5Y7-X424-Q



## How to Order

### SS5Y7-X424-Q

X part no.

CE marking

<b>X424</b>	Gas/Air switching valve With special connector assembly (Cable: Glass fiber heat resistant cover)
-------------	--

## Specifications

<b>Fluid</b>	<b>SY7140-5DOS-X311-Q</b>	Air
	<b>SY5140R-5DOS-Q</b>	Inert gas
<b>Operating pressure range</b>	<b>SY7140-5DOS-X311-Q</b>	0.25 to 0.7 MPa
	<b>SY5140R-5DOS-Q</b>	-100 kPa to 0.7 MPa
<b>Rated voltage</b>		24 VDC
<b>Power consumption</b>		0.45 W
<b>Allowable voltage fluctuation</b>		±10% of rated voltage

[Special specifications]

- Special manifold air circuit. (Refer to the figure on the right.)
- With special connector assembly (Cable: Glass fiber heat resistant cover)

Note 1) Order no. "SS5Y7-X424-Q" includes the valve.

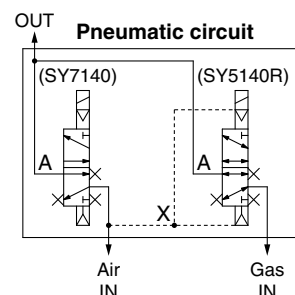
Note 2) Since SY7140 is internal pilot type, be careful not to drop the supply pressure from the minimum operating pressure.

## Flow Rate Characteristics (Cv Factor)

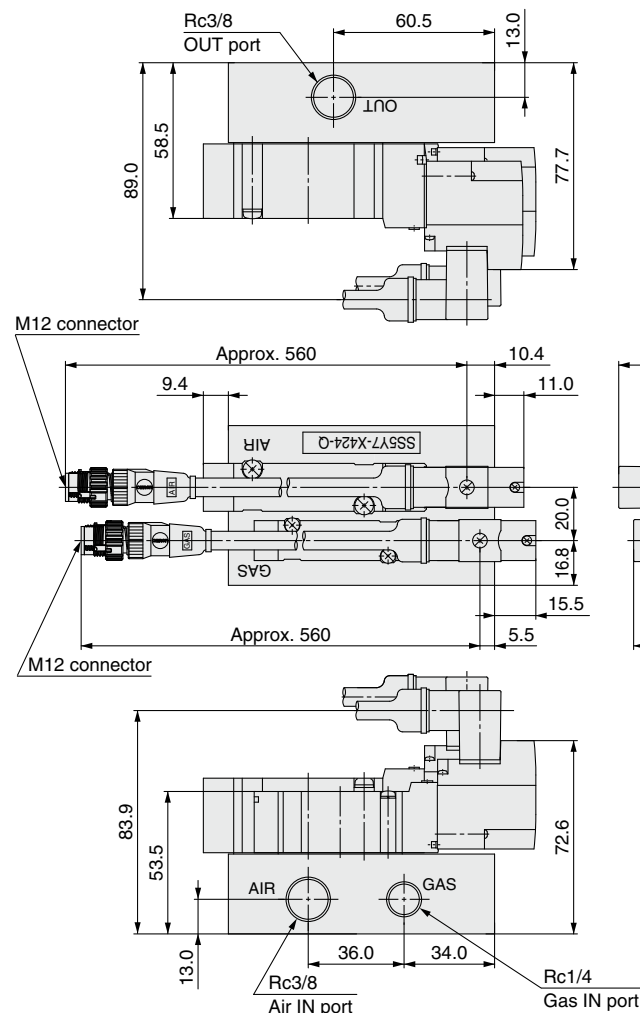
Passage	Valve	Cv
AIR→OUT	SY7140	0.63
GAS→OUT	SY5140R	0.40

Note 1) The flow rate characteristics show the flow rates when this special base is mounted.

Note 2) The flow rate is measured by means of the discharge method.



## Dimensions



(M12 connector)



Wiring

