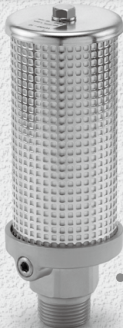


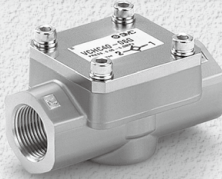
# 5.0 MPa

# Pneumatic

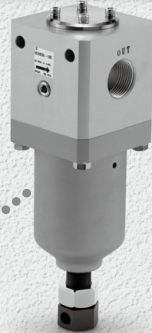
Applications included air-blowing, charging fluid into a vessel, or discharging (Blow-molding equipment, etc.)



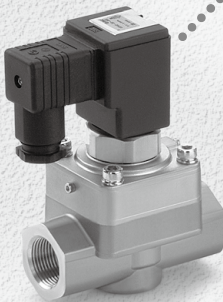
Silencer  
VCHN3/4



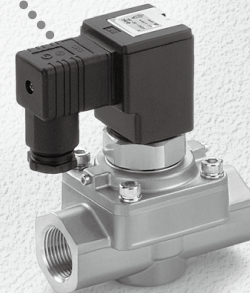
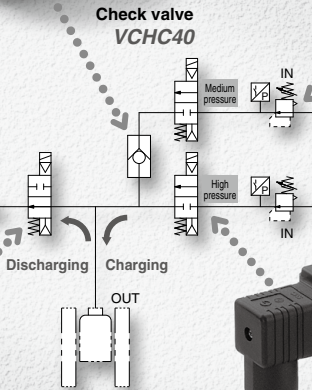
Check valve  
VCHC40



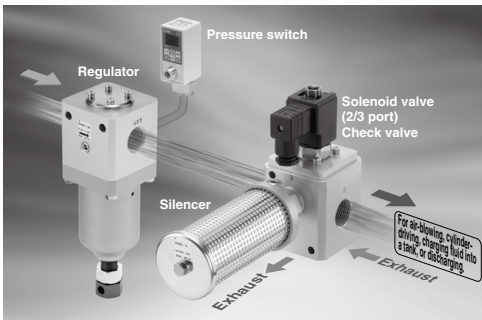
Direct operated regulator  
(Relieving type)  
VCHR30/40



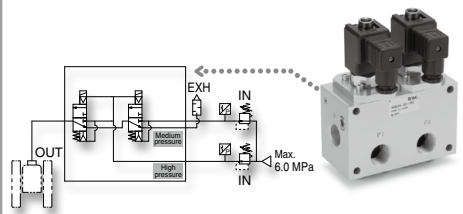
Pilot operated 2 port solenoid valve  
Normally open  
VCH42



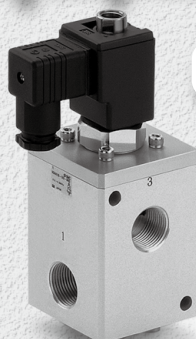
Pilot operated 2 port solenoid valve  
Normally closed  
VCH41



Made to Order/Manifold Unit

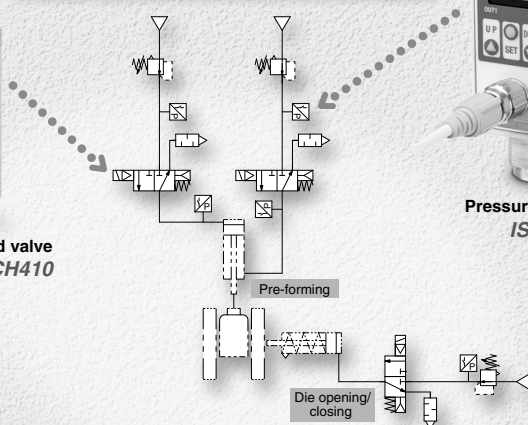


# Equipment Variation



Pilot operated 3 port solenoid valve  
VCH410

## Example of driving a cylinder



Pressure switch  
ISE75(H)

	Description	Features	Maximum operating pressure (MPa)	Series	Port size						Page
					1/4	1/2	3/4	1	1 1/4	1 1/2	
	Pilot operated 2 port solenoid valve	<b>Service life: 10 million cycles</b> Adopting a polyurethane elastomer poppet in a valve seat. Improved durability under a high pressure environment.  <b>Noise reduction 35 dB(A)</b> (At supply pressure 4.0 MPa, back pressure 2.0 MPa) Clogging-reduction with double-layer construction	5.0	VCH41(N.C.)			●	●			P.432
	VCH42(N.O.)					●	●				
	Check valve		5.0	VCHC40			●	●			P.435
	Pilot operated 3 port solenoid valve		5.0	VCH410		●	●	●			P.436
	Direct operated regulator (Relieving type)	Inlet pressure 6.0 Set pressure 0.5 to 5.0	VCHR30			●	●			P.444	
			VCHR40				●	●			
	Silencer	5.0 (Relief valve release pressure: 1.8 MPa)	VCHN3			●	●			P.450	
			VCHN4			●	●	●			

VCH□  
VDW  
SX10  
VQ  
LVM

## Related Equipment

	Pressure switch	2-color display Metal body (Aluminum die-cast)	10.0 15.0	ISE75(H)	●						Best Pneumatics No. 8
--	-----------------	--	--------------	----------	---	--	--	--	--	--	-----------------------

## Made to Order

1 6.0 MPa pilot operated regulator (Air operated type) ..... P.448

2 22.0 MPa 2 port air operated valve ..... P.439