

Made to Order Common Specifications: -XC104: Built-in Cylinder with Lock (MWB)



69 Built-in Cylinder with Lock (MWB)

Symbol

-XC104

This type has a built-in cylinder with lock, which accommodates intermediate stops, emergency stops and drop prevention, etc.

Applicable Series

Series	Description	Model	Action	Note	Vol. no. (for std model)
MGG	Guide cylinder	MGG	Double acting		②-2 From P. 538

How to Order

MGG | Bearing type | Mounting type | Bore size | Port thread type | – Stroke | – Auto switch | –XC104

Built-in cylinder with lock

Specifications

Applicable series	MGG			
Bore size (mm)	50	63	80	100
Basic cylinder	MDWBB	Bore size	Port thread type	– Stroke N – Auto switch
Minimum operating pressure ^{Note1)}	0.2 MPa (Horizontal with no load)			
Piston speed	50 to 1000 mm/s	50 to 700 mm/s		
Stroke adjustment range (One side) [Built-in adjusting bolts (2 pcs.)]	0 to -15 mm			
Non-rotating accuracy ^{*2}	Slide bearing	±0.04°		±0.03°
	Ball bushing bearing	±0.03°		±0.02°
Shock absorber model	RB2015	RB2725		

*1 Specifications other than shown above are the same as the standard type.

*2 Non-rotating rod accuracy must be below the values shown in the table at the retraction of the cylinder (initial value), and without loads or the conditions excluding the deflection of the guide rods.

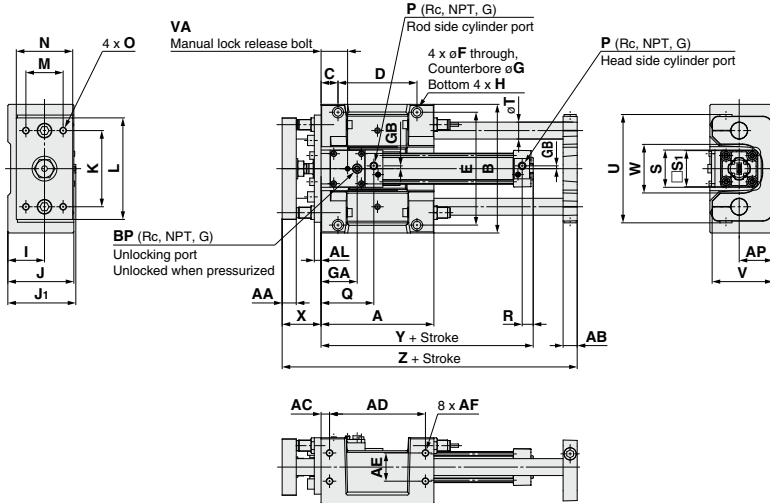
Note) When the piston is locked, the load mass is limited by the mounting orientation and the operating pressure.
For details about the lock specifications, etc., refer to the cylinders with lock/MWB series.

Made to Order Common Specifications: -XC104: Built-in Cylinder with Lock (MWB)



Dimensions

Basic type
ø50 to ø100



(mm)

Bore size (mm)	A	AA	AB	AC	AD	AE	AF	AL	AP	B	C	D	E	F	G	GA	GB	H	I
50	200	25	25	15	170	50	M12 x 1.75 depth 24	12	60	228	30	140	200	13.5	20 depth 14.5	64	5	M16 x 2 depth 28	65
63	230	25	27	15	200	55	M12 x 1.75 depth 24	12	70	262	30	170	234	13.5	20 depth 14.5	73	9	M16 x 2 depth 28	75
80	280	30	30	17.5	245	70	M14 x 2.0 depth 28	16	80	304	35	210	274	15	23 depth 17	92	11.5	M18 x 2.5 depth 32	85
100	280	32	30	17.5	245	70	M14 x 2.0 depth 28	16	80	304	35	210	274	15	23 depth 17	109	17	M18 x 2.5 depth 32	85

Bore size (mm)	J	J ₁	K	L	M	N	O	P	BP	Q	R	S	S ₁	T	U	V	VA	W	X	Y	Z
50	117	120.5	135	180	66	100	M12 x 1.75 depth 23	1/4	1/8	93.5	19.5	66	65	30	192	108	47	86	69	184	323
63	138	134.5	160	214	76	115	M12 x 1.75 depth 23	3/8	1/4	106.5	20.5	78	75	35	224	128	53	104	69	196	358
80	153	156.5	190	245	80	125	M14 x 2 depth 28	3/8	1/4	132	23	98	95	40	262	143	65	128	87	241	431
100	153	165.5	190	245	80	125	M14 x 2 depth 30	1/2	1/4	150	23	116	114	40	262	143	74	128	87	261	431

