

Pressure Gauge for General Purpose

G15/G27 Series



G15-10-01



G27-10-R1

- Be sure to read the precautions on [page 1298](#) for selection and mounting.

Standard Specifications

Model		G15	G27
Type		Back side thread	
Port size ⁽¹⁾		R 1/8: M5 (Female thread)	R 1/8
Fluid ^{(2) (3)}		Air	
Indication precision ⁽⁴⁾		±5% F.S. (Full span)	
Material	Case (Surface treatment)	Zinc die-casted (Black graphite coated)	
	Clear cover	Polycarbonate	
	Stud (Surface treatment)	Zinc die-casted (Black graphite coated)	
	Bourdon tube	Brass	
Weight (kg)		0.01	0.015

- Caution on handling: When drain or oil, etc. gets into the gauge, it may result in a malfunction.
- Note 1) When mounting a pressure gauge, use caution not to tighten excessively. Excessive tightening will cause product to be damaged. Use a pipe tape for sealing.
- Note 2) Water cannot be used as an operating fluid. Because the clearance gap of the air passage of the Bourdon tube is very small. Water will block the gap and cause a malfunction. Similarly, when using other fluids, please consult with SMC for fluid compatibility information concerning possible corrosion and response delay, etc.
- Note 3) Avoid freezing as this may cause a malfunction.
- Note 4) The guaranteed temperature range is 23°C ±5°C.

Model (Standard)

Model	Pressure range ⁽¹⁾	Indication unit	Connection thread
	MPa		
G15-10-01	0 to 1.0	MPa	R 1/8, M5 (Female thread)
G27-10-R1	0 to 1.0	MPa	R 1/8

Note 1) Do not apply more excessive pressure than max. pressure display. It will be a cause of malfunction.

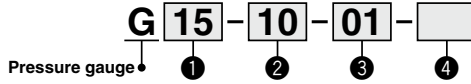
Model (Made to Order)

Other versions of this unit can be made on a Made-to-Order basis. Please consult with SMC for details, as delivery times may be extended.

Model	Pressure range ⁽¹⁾		Indication unit	Connection thread
	MPa	psi		
G27-10-M5	0 to 1.0	—	MPa	M5 (Female thread)
G27-P10-R1-X30 ⁽²⁾	0 to 1.0	0 to 150	MPa, psi	R 1/8

- Note 1) Do not apply more excessive pressure than max. pressure display. It will be a cause of malfunction.
- Note 2) Under the New Measurement Law, products for overseas use only (SI unit type for use in Japan)

How to Order



	Symbol	Description	1	
			G15	G27
	+		●	●
2 Max. display pressure	10 ⁽¹⁾	1.0 MPa	●	●
	P10 ^{(1), (2)}	1.0 MPa, 150 psi	—	○ ⁽³⁾
	+		●	—
3 Connection thread	01	R 1/8: M5 (Female thread)	●	—
	R1	R 1/16	—	●
	+		●	●
4 Special specification ^(Note 4)	Nil	—	●	●
	X30	Both MPa and psi	—	○ ⁽³⁾

Note 1) Pressure other than 1.0 MPa is not available.

Note 2) This symbol must be used with Special specification "X30."

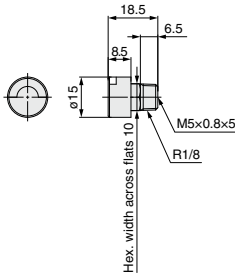
Note 3) Under the New Measurement Law, products for overseas use only (SI unit type for use in Japan)

Note 4) Wetted parts stainless steel specifications are not available.

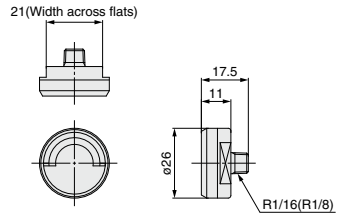
Note 5) Cover ring assembly is not available.

Dimensions (Except Made-to-Order products)

G15-10-01



G27-10-R¹₀₁



* The dimensions in (): Connection thread R 1/8

Pressure Gauge for General Purpose/ With Limit Indicator

G36/GA36 Series

RoHS



G36-10-01

• Be sure to read the precautions on page 1298 for selection and mounting.

Standard Specifications

Model		G36	GA36
Type		Back side thread	Vertical side thread
Port size ⁽¹⁾		R 1/8 (Option M: With M5 female thread)	R 1/8
Fluid ^{(2) (4)}		Air	
Indication precision ⁽⁵⁾		±3% F.S. (Full span)	
Material	Case (Surface treatment)	Rolled steel (Electrodeposition coating black)	Stainless steel (Black melamine painted)
	Clear cover ⁽³⁾	Polycarbonate (Part no.: G36-00-00-4)	Polycarbonate (Part no.: G36-00-00-3)
	Stud (Surface treatment)	Aluminum die-casted (Black disulfide molybdenum coat treated)	Brass
	Bourdon tube	Brass	
Weight (kg)		0.04	0.05

Note 1) When installing a pressure gauge, be careful not to fasten too tight. Excessive tightening will result in damage. Use a pipe tape for sealing.

Note 2) Not applicable to water as fluid because its stud is made from aluminum die-casted. Water may cause corrosion and block the air passage.

Note 3) Clear cover: G36-00-00-4 is not compatible with G36-00-00-3.

Note 4) Avoid freezing as this may cause a malfunction.

Note 5) The guaranteed temperature range is 23°C ±5°C.

Model (Standard)

Model	Pressure range ⁽¹⁾		Indication unit	Connection thread	Note
	MPa				
G36-2-01	0 to 0.2		MPa	R 1/8	—
G36-4-01	0 to 0.4				
G36-7-01	0 to 0.7				
G36-10-01	0 to 1.0				
GA36-10-01	0 to 1.0				

Note 1) Do not apply pressure more than the maximum display pressure. This will cause a malfunction.

Model (Made to Order)

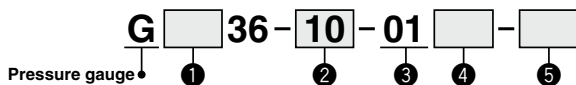
Other versions of this unit can be made on a Made-to-Order basis. Please consult with SMC for details, as delivery times may be extended.

Model	Pressure range ⁽¹⁾		Indication unit	Connection thread	Note
	MPa	psi			
G36-P2-01-X30 ⁽²⁾	0 to 0.2	0 to 30	MPa, psi	R 1/8	—
G36-P10-01-X30 ⁽²⁾	0 to 1.0	0 to 150			
G36-15-01	0 to 1.5	—			

Note 1) Do not apply pressure more than the maximum display pressure. This will cause a malfunction.

Note 2) Under the New Measurement Law, products for overseas use only (SI unit type for use in Japan).

How to Order



		Symbol	Description	①	
				Type	
				G36	GA36
				Back side thread	Vertical side thread
		+			
②	Max. display pressure	2	0.2 MPa	●	●
		4	0.4 MPa	●	●
		7	0.7 MPa	●	●
		10	1.0 MPa	●	●
		15	1.5 MPa	●	●
		P2 ⁽¹⁾	0.2 MPa, 30 psi	○ ⁽²⁾	○ ⁽²⁾
		P4 ⁽¹⁾	0.4 MPa, 60 psi	○ ⁽²⁾	○ ⁽²⁾
		P7 ⁽¹⁾	0.7 MPa, 100 psi	○ ⁽²⁾	○ ⁽²⁾
		P10 ⁽¹⁾	1.0 MPa, 150 psi	○ ⁽²⁾	○ ⁽²⁾
		P15 ⁽¹⁾	1.5 MPa, 220 psi	○ ⁽²⁾	—
		+			
③	Connection thread	01	R 1/8	●	●
		+			
④	Option	Nil	—	●	●
		M ⁽³⁾	With M5 (Female thread)	●	—
		+			
⑤	Special specification ^{Note 4)}	Nil	—	●	●
		X2	Stud parts nickel plated	— ⁽⁶⁾	●
		X4	Oil-free (Wetted parts degrease washing)	●	●
		X30	Both MPa and psi	○ ⁽²⁾	○ ⁽²⁾

Note 1) This symbol must be used with Special specification "X30."

Note 2) Under the New Measurement Law, products for overseas use only (SI unit type for use in Japan)

Note 3) To use the pressure gauge with M5 (female thread), attach the joint when piping the tube. For combinations with the special specification products, please consult SMC separately.

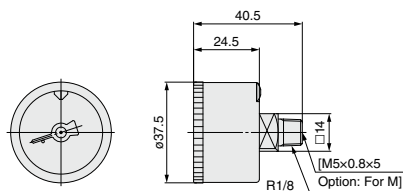
Note 4) Wetted parts stainless steel specifications are not available.

Note 5) Cover ring assembly is not available.

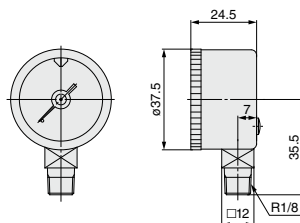
Note 6) When necessary, please contact SMC.

Dimensions

G36-□□-01(M)



GA36-□□-01



Pressure Gauge for General Purpose/ With Limit Indicator

G46/GA46 Series

RoHS



G46-10-02M-C

- Be sure to read the precautions on [page 1298](#) for selection and mounting.

Standard Specifications

Model		G46	GA46
Type		Back side thread	Vertical side thread
Port size ⁽¹⁾		R 1/8, R 1/4 (Option M: with M5 female thread)	
Fluid ^{(2) (4)}		Air	
Indication precision ⁽⁵⁾		±3% F.S. (Full span)	
Material	Case (Surface treatment)	Rolled steel (Electrodeposition coating black)	Stainless steel (Black melamine painted)
	Clear cover ⁽³⁾	Polycarbonate Part no.: G46-00-00-4	Polycarbonate Part no.: G46-00-00-3
	Stud (Surface treatment)	Aluminum die-casted (Black disulfide molybdenum coated)	Brass
	Bourdon tube	Brass	
Weight (kg)		0.05	0.075
Attachment: With cover ring assembly	C	Part no.: 1305104-1A	—
	C2	Part no.: 1305104-9A	—

Note 1) When mounting a pressure gauge, use caution not to tighten excessively. Excessive tightening will cause product to be damaged. Use a pipe tape for sealing.

Note 2) Not applicable to water as fluid because its stud is made from aluminum die-casting. Water may cause corrosion and block the air passage.

Note 3) Clear cover: G46-00-00-4 is not compatible with G46-00-00-3.

Note 4) Avoid freezing as this may cause a malfunction.

Note 5) The guaranteed temperature range is 23°C ±5°C.

Model (Standard)

Model	Pressure range ⁽¹⁾		Indication unit	Connection thread	Note
	MPa	psi			
G46-2-01/02	0 to 0.2	—	MPa	R 1/8, 1/4	—
G46-4-01/02	0 to 0.4	—			
G46-7-01/02	0 to 0.7	—			
G46-10-01/02	0 to 1.0	—			
G46-2-01 to 02M	0 to 0.2	—			
G46-4-01 to 02M	0 to 0.4	—		R 1/8, 1/4 M5 (Female thread)	
G46-7-01 to 02M	0 to 0.7	—			
G46-10-01 to 02M	0 to 1.0	—			
G46-2-01 to 02	0 to 0.2	—			
GA46-10-01 to 02	0 to 1.0	—			

Note 1) Do not apply pressure more than the maximum display pressure. This will cause a malfunction.

Model (Made to Order)

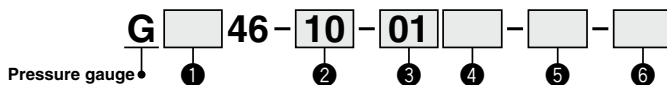
Other versions of this unit can be made on a Made-to-Order basis. Please consult with SMC for details, as delivery times may be extended.

Model	Pressure range ⁽¹⁾		Indication unit	Connection thread	Note	
	MPa	psi				
G46-2-01 to 02-C/C2	0 to 0.2	—	MPa	R 1/8, 1/4	With cover ring assembly	
G46-4-01 to 02-C/C2	0 to 0.4	—				
G46-7-01 to 02-C/C2	0 to 0.7	—				
G46-10-01 to 02-C/C2	0 to 1.0	—				
G46-2-01 to 02M-C/C2	0 to 0.2	—				R 1/8, 1/4 M5 (Female thread)
G46-4-01 to 02M-C/C2	0 to 0.4	—				
G46-7-01 to 02M-C/C2	0 to 0.7	—				
G46-10-01 to 02M-C/C2	0 to 1.0	—				
G46-P2-01 to 02-X30 ⁽²⁾	0 to 0.2	0 to 30		MPa, psi		
G46-P10-01 to 02-X30 ⁽²⁾	0 to 1.0	0 to 150				
G46-P2-01 to 02-C/C2-X30 ⁽²⁾	0 to 0.2	0 to 30				
G46-P10-01 to 02-C/C2-X30 ⁽²⁾	0 to 1.0	0 to 150				
G46-15-02	0 to 1.5	—	MPa		R 1/4	

Note 1) Do not apply pressure more than the maximum display pressure. This will cause a malfunction.

Note 2) Under the New Measurement Law, products for overseas use only (SI unit type for use in Japan).

How to Order



		Symbol	Description	①	
				Type	
				G46	GA46
				Back side thread	Vertical side thread
		+			
②	Max. display pressure	2	0.2 MPa	●	●
		4	0.4 MPa	●	●
		7	0.7 MPa	●	●
		10	1.0 MPa	●	●
		15	1.5 MPa	●	●
		P2 ⁽¹⁾	0.2 MPa, 30 psi	○ ⁽²⁾	○ ⁽²⁾
		P4 ⁽¹⁾	0.4 MPa, 60 psi	○ ⁽²⁾	○ ⁽²⁾
		P7 ⁽¹⁾	0.7 MPa, 100 psi	○ ⁽²⁾	○ ⁽²⁾
		P10 ⁽¹⁾	1.0 MPa, 150 psi	○ ⁽²⁾	○ ⁽²⁾
		P15 ⁽¹⁾	1.5 MPa, 220 psi	○ ⁽²⁾	—
		+			
③	Connection thread	01	R 1/8	●	●
		02	R 1/4	●	●
		+			
④	Option	Nil	—	●	●
		M ⁽³⁾	With M5 (Female thread)	●	—
		+			
⑤	Attachment	Nil	Without cover ring assembly	●	●
		C	Clear cover has no protrusion. (Clear cover is irremovable.)	●	—
		C2	Clear cover has protrusion. (Clear cover is removable.) The wrench flats protrude.	●	—
		+			
⑥	Special specification	Nil	—	●	●
		X2	Stud parts Nickel plated	— ⁽⁵⁾	●
		X30	Both MPa and psi	○ ⁽²⁾	○ ⁽²⁾

Note 1) This symbol must be used with Special specification "X30."

Note 2) ○: Under the New Measurement Law, products for overseas use only (SI unit type for use in Japan).

Note 3) To use the pressure gauge with M5 (female thread), attach the joint when piping the tube. For combinations with the special specification products, please consult SMC separately.

Note 4) When welded parts with the stainless steel specifications are needed, use the G46-□-□-SRB.

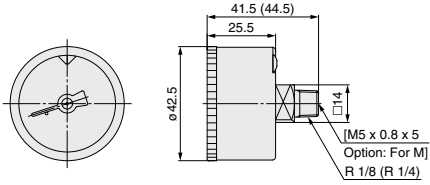
Note 5) When necessary, please contact SMC.

G46/GA46 Series

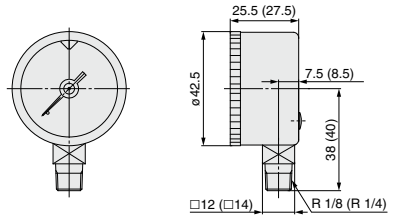
Dimensions (Except Made-to-Order products)

* The dimensions in (): Connecting thread R 1/4

G46-□□-01 to 02 (M)



GA46-□□-01 to 02

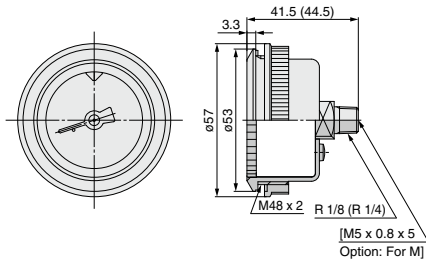


G46-□□-01 to 02 (M)-C

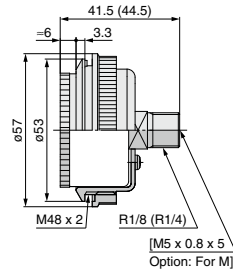
G46-□□-01 to 02 (M)-C2

With cover ring assembly
(For panel mount)

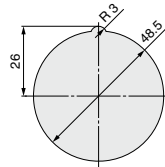
Type C
(Clear cover is not removable.)



Type C2
(Clear cover is removable. The wrench flats protrude.)



Panel fitting dimensions Plate thickness Max. 3.5t



Pressure Gauge for General Purpose

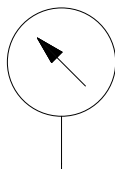
G33/GA33 Series

RoHS



- Be sure to read the precautions on [page 1298](#) for selection and mounting.

Symbol



Standard Specifications

Model		G33	GA33
Type		Back side thread	Vertical side thread
Port size ⁽¹⁾		R 1/8	
Fluid ^(2,3)		Air	
Indication precision ⁽⁴⁾		±3% F.S. (Full span)	
Material	Case	Stainless steel	
	Clear cover	Glass	
	Stud	Brass	
	Bourdon tube	Brass	
Weight [kg]		0.03	0.033
Applicable model		IP5000, IR1000, IT1000	ARM2500, 3000

Note 1) When mounting a pressure gauge, use caution not to tighten excessively. Excessive tightening will cause product to be damaged. Use a pipe tape for sealing.

Note 2) When using other fluids, please consult with SMC for fluid compatibility information concerning corrosive potential.

Note 3) Avoid freezing as this may cause a malfunction.

Note 4) The guaranteed temperature range is 23°C ±5°C.

Model (Standard)

Model	Pressure range ⁽¹⁾		Indication unit	Connection thread	Note
	MPa				
G33-2-01	0 to 0.2		MPa	R 1/8	—
G33-3-01	0 to 0.3				
G33-4-01	0 to 0.4				
G33-6-01	0 to 0.6				
G33-10-01	0 to 1.0				
GA33-2-01	0 to 0.2				
GA33-4-01	0 to 0.4				
GA33-7-01	0 to 0.7				
GA33-10-01	0 to 1.0				

Note 1) Do not apply pressure more than the maximum display pressure. This will cause a malfunction.

Model (Made to Order)

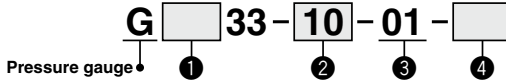
Model	Pressure range ⁽¹⁾		Indication unit	Connection thread	Note
	MPa	psi			
G33-2-01-X2	0 to 0.2	—	MPa	R 1/8	X2: Stud parts electroless nickel plated
G33-4-01-X2	0 to 0.4	—			
G33-6-01-X2	0 to 0.6	—			
G33-10-01-X2	0 to 1.0	—			
GA33-2-01-X2	0 to 0.2	—			
GA33-4-01-X2	0 to 0.4	—			X2: Stud parts nickel plated
GA33-7-01-X2	0 to 0.7	—			
GA33-10-01-X2	0 to 1.0	—			
G33-10-01-X4	0 to 1.0	—			
GA33-P10-01-X30 ⁽²⁾	0 to 1.0	0 to 150			

Note 1) Do not apply pressure more than the maximum display pressure. This will cause a malfunction.

Note 2) Under the New Measurement Law, products for overseas use only (SI unit type for use in Japan)

G33/GA33 Series

How to Order



		Symbol	Description	①	
				Type	
				G33	GA33
				Back side thread	Vertical side thread
		+			
②	Max. display pressure	2	0.2 MPa	●	●
		3	0.3 MPa	●	—
		4	0.4 MPa	●	●
		6	0.6 MPa	●	—
		7	0.7 MPa	●	—
		10	1.0 MPa	●	●
		P2 ⁽¹⁾	0.2 MPa, 30 psi	○ ⁽²⁾	—
		P3 ⁽¹⁾	0.3 MPa, 45 psi	○ ⁽²⁾	—
		P4 ⁽¹⁾	0.4 MPa, 60 psi	○ ⁽²⁾	—
		P7 ⁽¹⁾	0.7 MPa, 100 psi	○ ⁽²⁾	—
P10 ⁽¹⁾	1.0 MPa, 150 psi	○ ⁽²⁾	○ ⁽²⁾		
		+			
③	Connection thread	01	R 1/8	●	●
		+			
④	Special specification ^{Note 3)}	Nil	—	●	●
		X2	Stud parts nickel plated	●	●
		X4	Oil-free (Wetted parts degrease washing)	●	●
		X30	Both MPa and psi	○ ⁽²⁾	○ ⁽²⁾

Note 1) This symbol must be used with Special specification "X30."

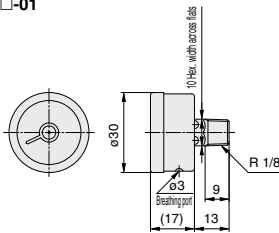
Note 2) Under the New Measurement Law, products for overseas use only (SI unit type for use in Japan)

Note 3) X3 (Wetted parts stainless steel) specifications are not available.

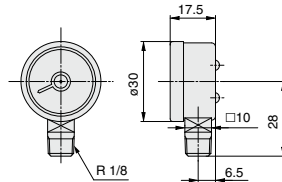
Note 4) Cover ring assembly is not available.

Dimensions

G33-□□-01



GA33-□□-01



Pressure Gauge for General Purpose (DT type)

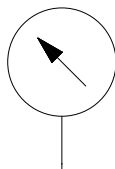
G43 Series



G43-10-01

- Be sure to read the precautions on [page 1298](#) for selection and mounting.

Symbol



Standard Specifications

Model		G43
Type		Back side thread
Port size ⁽¹⁾		R 1/8, R 1/4
Fluid ⁽²⁾		Air
Indication precision ⁽³⁾		±3% F.S. (Full span)
Material	Case	Stainless steel
	Clear cover	Glass
	Stud	Brass
	Bourdon tube	Brass
Weight [kg]		0.07
Applicable model		IP200, IP8000, IR2000, IR3000, IT2000, IT4000

Note 1) When mounting a pressure gauge, use caution not to tighten excessively. Excessive tightening will cause product to be damaged. Use a pipe tape for sealing.

Note 2) Avoid freezing as this may cause a malfunction.

Note 3) The guaranteed temperature range is 23°C ±5°C.

Model (Standard)

Model	Pressure range ⁽¹⁾	Indication unit	Connection thread	Note
	MPa			
G43-2-01 to 02	0 to 0.2	MPa	R 1/8, R 1/4	—
G43-4-01 to 02	0 to 0.4			
G43-6-01	0 to 0.6			
G43-7-01 to 02	0 to 0.7			
G43-10-01 to 02	0 to 1.0			

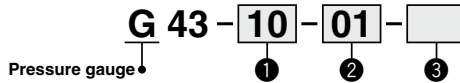
Note 1) Do not apply pressure more than the maximum display pressure. This will cause a malfunction.

Model (Made to Order)

Model	Pressure range ⁽¹⁾	Indication unit	Connection thread	Note		
	MPa					
G43-2-01 to 02-X2	0 to 0.2	MPa	R 1/8, R 1/4	X2: Stud parts nickel plated		
G43-4-01 to 02-X2	0 to 0.4					
G43-6-01-X2	0 to 0.6					
G43-7-01 to 02-X2	0 to 0.7					
G43-10-01 to 02-X2	0 to 1.0		R 1/8, R 1/4	X3: Wetted parts stainless steel		
G43-2-01 to 02-X3	0 to 0.2					
G43-4-01 to 02-X3	0 to 0.4					
G43-6-01-X3	0 to 0.6					
G43-7-01 to 02-X3	0 to 0.7					
G43-10-01 to 02-X3	0 to 1.0				R 1/8, R 1/4	X4: Oil-free (Wetted parts degreasing)
G43-2-01-X4	0 to 0.2					
G43-4-01 to 02-X4	0 to 0.4					
G43-7-01 to 02-X4	0 to 0.7					
G43-10-01 to 02-X4	0 to 1.0					

Note 1) Do not apply pressure more than the maximum display pressure. This will cause a malfunction.

How to Order



		Symbol	Description	G43
		+		
①	Max. display pressure	2	0.2 MPa	●
		3	0.3 MPa	●
		4	0.4 MPa	●
		6	0.6 MPa	●
		7	0.7 MPa	●
		10	1.0 MPa	●
		P2 ⁽¹⁾	0.2 MPa, 30 psi	○ ⁽²⁾
		P4 ⁽¹⁾	0.4 MPa, 60 psi	○ ⁽²⁾
		P6 ⁽¹⁾	0.6 MPa, 90 psi	○ ⁽²⁾
		P7 ⁽¹⁾	0.7 MPa, 100 psi	○ ⁽²⁾
P10 ⁽¹⁾	1.0 MPa, 150 psi	○ ⁽²⁾		
		+		
②	Connection thread	01	R 1/8	●
		02	R 1/4	●
		+		
③	Special specification	Nil	—	●
		X2	Stud parts nickel plated	●
		X3 ⁽³⁾	Wetted parts stainless steel	●
		X4	Oil-free (Wetted parts degrease washing)	●
		X30	Both MPa and psi	○ ⁽²⁾

Note 1) This symbol must be used with Special specification "X30."

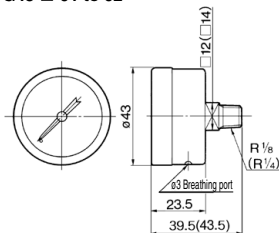
Note 2) Under the New Measurement Law, products for overseas use only (SI unit type for use in Japan)

Note 3) Movable parts (gear, etc.) inside pressure gauge are made of brass.

Note 4) Cover ring assembly is not available.

Dimensions (Except Made-to-Order products)

G43-□-01 to 02



* The dimensions in () : Connection thread R 1/4

With Color Zone Limit Indicator

G36-L/G46-L Series

RoHS



G36-10-01-L

G46-10-02-L

Standard Specifications

Model		G36-L	G46-L
Type	Back side thread		
Port size ⁽¹⁾	R 1/8		R 1/8, R 1/4
Fluid ^{(2) (3)}	Air		
Indication precision ⁽⁴⁾	±3%F.S. (Full span)		
Material	Case (Surface treatment)	Stainless steel (Black melamine painted)	
	Clear cover	Polycarbonate (Part no.: G36-00-00-3) Nylon (Part no.: G36-00-00-3N)	Polycarbonate (Part no.: G46-00-00-3) Nylon (Part no.: G46-00-00-3N)
	Stud	Brass	
	Bourdon tube	Brass	
Weight (kg)	0.04		0.05
Attachment: With cover ring assembly	C	Part no.: 1305104-1A ⁽⁵⁾	
	C2	Part no.: 1305104-9A	

Note 1) When mounting a pressure gauge, use caution not to tighten excessively. Excessive tightening will cause product to be damaged. Use a pipe tape for sealing.

Note 2) When using other fluids, please consult with SMC for fluid compatibility information concerning corrosive potential.

Note 3) Avoid freezing as this may cause a malfunction.

Note 4) The guaranteed temperature range is 23°C ±5°C.

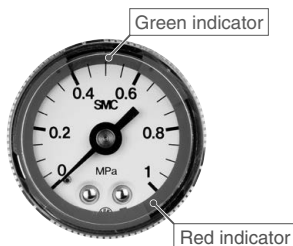
Note 5) C only applies when the material of the clear cover is polycarbonate.

Model (Standard)

Model	Pressure range ⁽¹⁾	Green zone setting range		Indication unit	Connection thread	Note
	MPa	Minimum setting range MPa	Maximum setting range MPa			
G36-2-01-L□	0 to 0.2	0.01	0.1	MPa	R 1/8	—
G36-4-01-L□	0 to 0.4	0.02	0.2			
G36-10-01-L□	0 to 1.0	0.05	0.5			
G46-2-01 to 02-L□	0 to 0.2	0.01	0.1		R 1/8 1/4	
G46-4-01 to 02-L□	0 to 0.4	0.02	0.2			
G46-10-01 to 02-L□	0 to 1.0	0.05	0.5			

Note 1) Do not apply pressure more than the maximum display pressure. This will cause a malfunction.

■Red and green zones offer improved visibility of pressure control range.



Green indicator

Red indicator

Model (Made to Order)

Model	Pressure range ⁽¹⁾		Green zone setting range		Indication unit	Connection thread	Note
	MPa	psi	Minimum setting range MPa (psi)	Maximum setting range MPa (psi)			
G36-P2-01-L□-X30	0 to 0.2	0 to 30	0.01 (2)	0.1 (14)	MPa psi	R 1/8	—
G36-P4-01-L□-X30	0 to 0.4	0 to 60	0.02 (4)	0.2 (28)			
G36-P10-01-L□-X30	0 to 1.0	0 to 150	0.05 (10)	0.5 (70)			
G46-P2-01 to 02-L□-X30	0 to 0.2	0 to 30	0.01 (2)	0.1 (14)		R 1/8 1/4	
G46-P4-01 to 02-L□-X30	0 to 0.4	0 to 60	0.02 (4)	0.2 (28)			
G46-P10-01 to 02-L□-X30	0 to 1.0	0 to 150	0.05 (10)	0.5 (70)			

Note 1) Do not apply pressure more than the maximum display pressure. This will cause a malfunction.

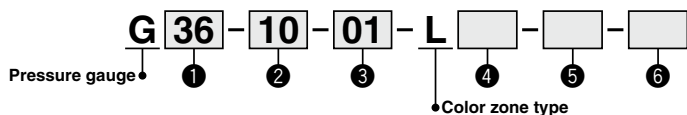
Note 2) Under the New Measurement Law, products for overseas use only (SI unit type for use in Japan).

Indicator adjusts to highlight preferred range.



G36-L/G46-L Series

How to Order



		Symbol	Description	①	
				Size	
				G36	G46
②	Max. display pressure	+			
		2	0.2 MPa	●	●
		4	0.4 MPa	●	●
		10	1.0 MPa	●	●
		P2 ⁽¹⁾	0.2 MPa, 30 psi	○ ⁽²⁾	○ ⁽²⁾
		P4 ⁽¹⁾	0.4 MPa, 60 psi	○ ⁽²⁾	○ ⁽²⁾
P10 ⁽¹⁾	1.0 MPa, 150 psi	○ ⁽²⁾	○ ⁽²⁾		
③	Connection thread	+			
		01	R 1/8	●	●
		+	02	R 1/4	—
④	Clear cover material	+			
		Nil	Polycarbonate	●	●
		+	N	Nylon	●
⑤	Attachment	+			
		Nil	Without cover ring assembly	—	●
		C	Clear cover has no protrusion. (Clear cover is irremovable.)	—	△ ⁽³⁾
		+	C2	Clear cover has protrusion. (Clear cover is removable.) The wrench flats protrude.	—
⑥	Special specification	+			
		Nil	—	●	●
		X2	Stud parts nickel plated	●	—
		+	X30	Both MPa and psi	○ ⁽²⁾

Note 1) This symbol must be used with Special specification "X30."

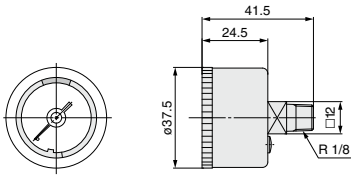
Note 2) Under the New Measurement Law, products for overseas use only (SI unit type for use in Japan)

Note 3) △ only applies when the material of the clear cover is polycarbonate.

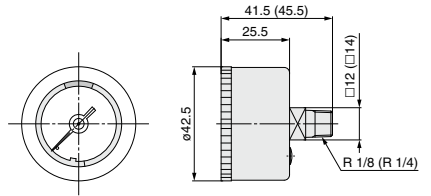
With Color Zone Limit Indicator **G36-L/G46-L Series**

Dimensions * The dimensions in (): Connection thread R 1/4

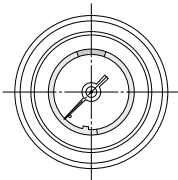
G36-□□-01-L (N)



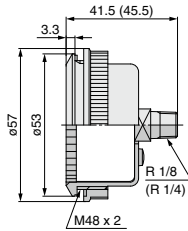
G46-□□-01 to 02-L(N)



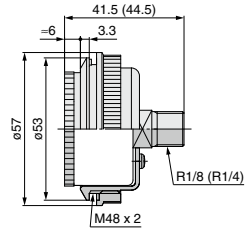
G46-□□-01 to 02-L-C
G46-□□-01 to 02-L(N)-C2
 With cover ring assembly
 (For panel mount)



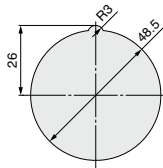
Type C
 (Clear cover is not removable.)



Type C2
 (Clear cover is removable. The wrench flats protrude.)



Panel fitting dimensions
 Plate thickness Max. 3.5 t



Pressure Gauge with Color Zone Limit Indicator **G53-L/G63-L**



G53-10-02

G63-10-02

Standard Specifications

Model		G53-L	G63-L
Type		Back side thread	
Connection thread* ¹		R1/8, R1/4	
Fluid* ²		Air	
Indication precision* ³		±3%F.S.(Full span)	
Material	Case	Stainless steel	
	Clear cover	Polycarbonate (Part no.: G53-00-00-3)	Polycarbonate (Part no.: G63-00-00-3)
	Stud	Brass	
	Bourdon tube	Brass	
Weight [kg]		0.093	0.107

* Caution for handling: Avoid freezing as this may cause a malfunction.

*¹ When mounting a pressure gauge, use caution not to tighten it excessively. Excessive tightening will damage the product.

Use sealant tape for sealing.

*² Before using with other fluids, please contact SMC for fluid compatibility information concerning corrosive potential.

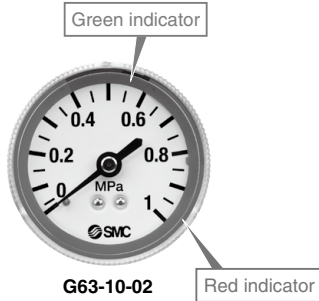
*³ The guaranteed temperature range is 23°C ±5°C.

Model (Standard)

Model	Pressure range* ¹	Green zone setting range		Indication unit	Connection thread
	MPa	Minimum setting range [MPa]	Maximum setting range [MPa]		
G53-2-01 to 02-L	0 to 0.2	0.01	0.1	MPa	R1/8, R1/4
G53-4-01 to 02-L	0 to 0.4	0.02	0.2		
G53-7-01 to 02-L	0 to 0.7	0.05	0.35		
G53-10-01 to 02-L	0 to 1.0	0.05	0.5		
G63-10-01 to 02-L	0 to 1.0	0.05	0.5		

*¹ Do not apply any amount of pressure that exceeds the maximum display pressure. This will cause a malfunction.

■ Red and green zones offer improved visibility of pressure control range.



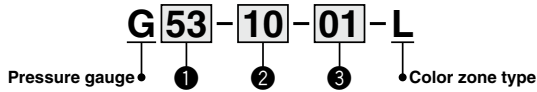
G63-10-02

Indicator can be adjusted to highlight preferred range



Pressure Gauge
with Color Zone Limit Indicator **G53-L/G63-L Series**

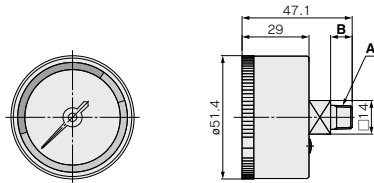
How to Order



	Symbol	Description	① Size		
			G53	G63	
	+				
②	Max. display pressure	2	0.2 MPa	●	—
		4	0.4 MPa	●	—
		7	0.7 MPa	●	—
		10	1.0 MPa	●	●
	+				
③	Connection thread	01	R1/8	●	●
		02	R1/4	●	●

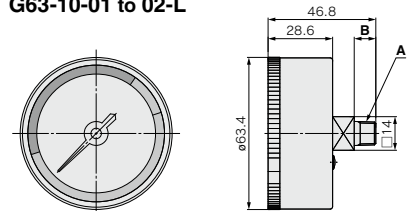
Dimensions

G53-□-01 to 02-L



Part no.	A	B
G53-□-01-L	R1/8	9
G53-□-02-L	R1/4	11

G63-10-01 to 02-L



Part no.	A	B
G63-10-01-L	R1/8	9
G63-10-02-L	R1/4	11